

Step 1 – Download CAD Libraries:

1. Open <http://www.PCBMatrix.com>

2. Log-in by double-clicking the Blue Log-in button in the upper right corner –



Or directly go to: <https://www.pcbmatrix.com/members/users/MemberPage.asp>

Insert the User Name and Password that was emailed to you

Enter your login information below:

Username:

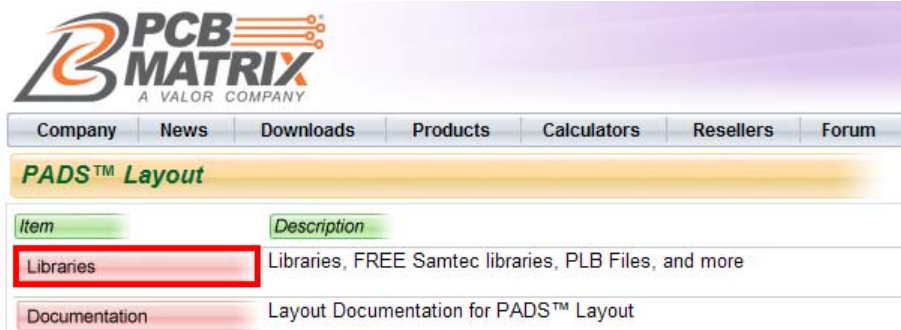
Password:

NEW customer or LOST password?
[Retrieve password!](#)

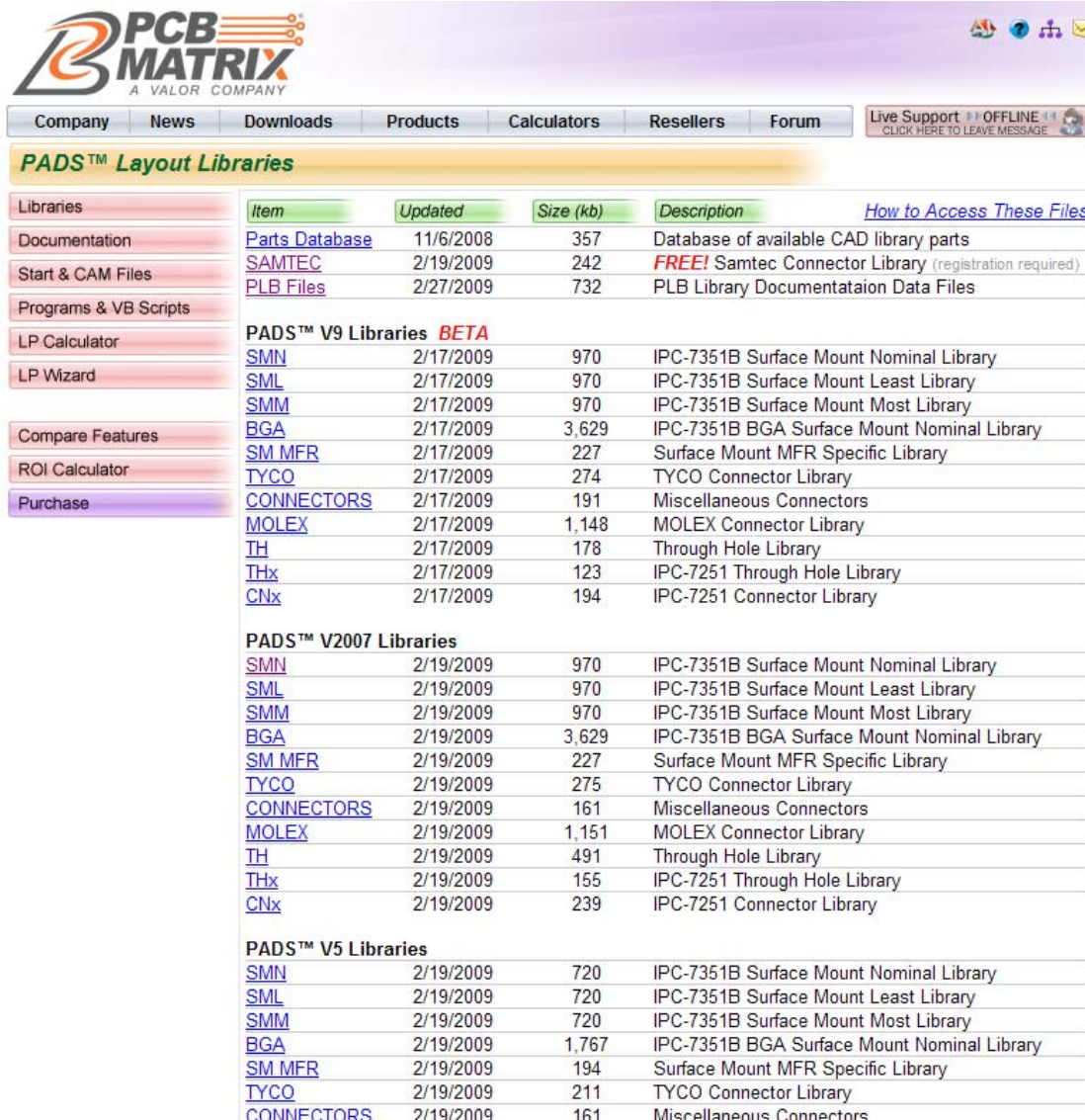
3. Mouse over “**Products**” button and select your CAD tool



4. Next select the “Libraries” button –



5. The CAD Libraries should be lit up in “Blue” and you can download them individually



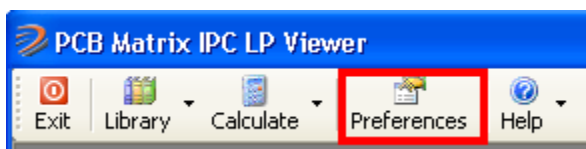
6. Don't forget to download the **SAMTEC** connector library at the top.
7. Also download the PLB files under the SAMTEC download and store in a temp folder. These are your library documentation files for the LP Viewer.
8. Open Windows Explorer to the Temp folder and unzip the PLB files.

Step 2 – Download & Install LP Viewer:

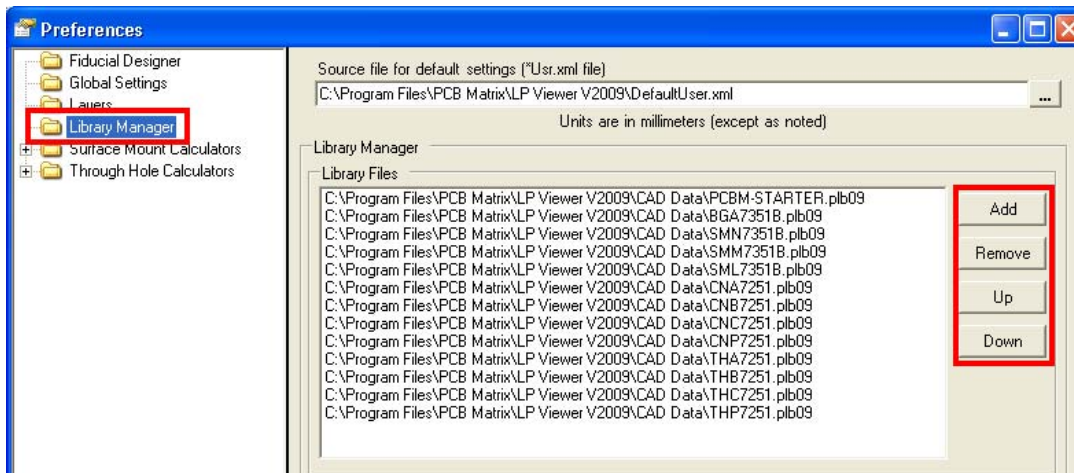
1. Open <http://www.PCBMatrix.com>
2. Select the LP Viewer Download in the upper right corner –



3. Save the **PCBM_LP_Viewer_V2009** Zip file to the same Temp Folder where you placed the PLB files
4. Open Windows Explorer to the Temp folder and unzip the **PCBM_LP_Viewer_V2009** Zip file
5. Double-click on the **PCBM_LP_Viewer_V2009** exe file to install the LP Viewer
6. Copy the PLB files in the Temp folder to this folder: C:\Program Files\PCB Matrix\LP Viewer V2009\CAD Data
7. Run the LP Viewer and select the “Preferences” ICON in the toolbar –



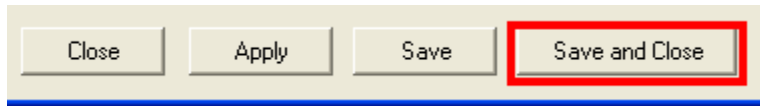
8. Select the “Library Manager” folder on the left side and use the buttons to add & delete PLB files –



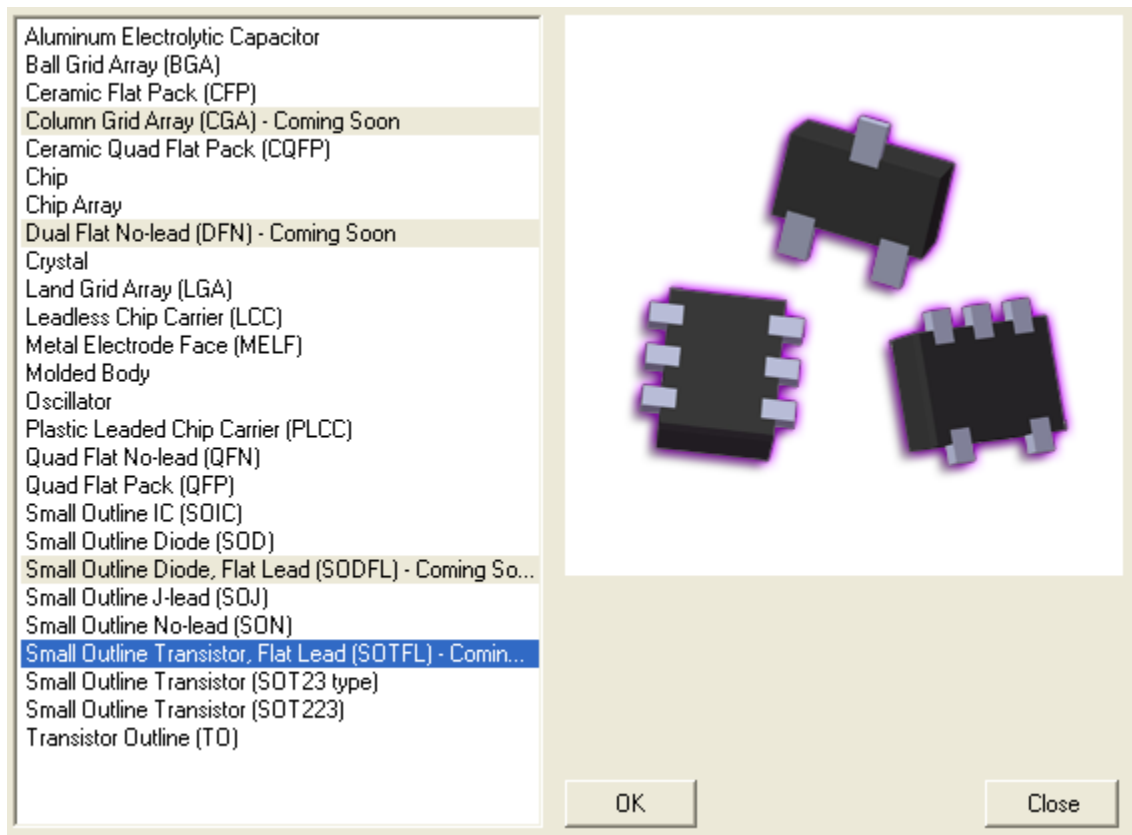
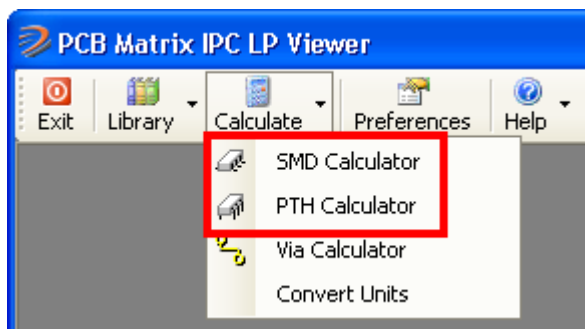
How To: Download and Install PCBM CAD Libraries, LP Viewer and PLB documentation Files

For more details, visit <http://www.PCBMatrix.com>

9. Select the "Save & Close" button when you are completed –

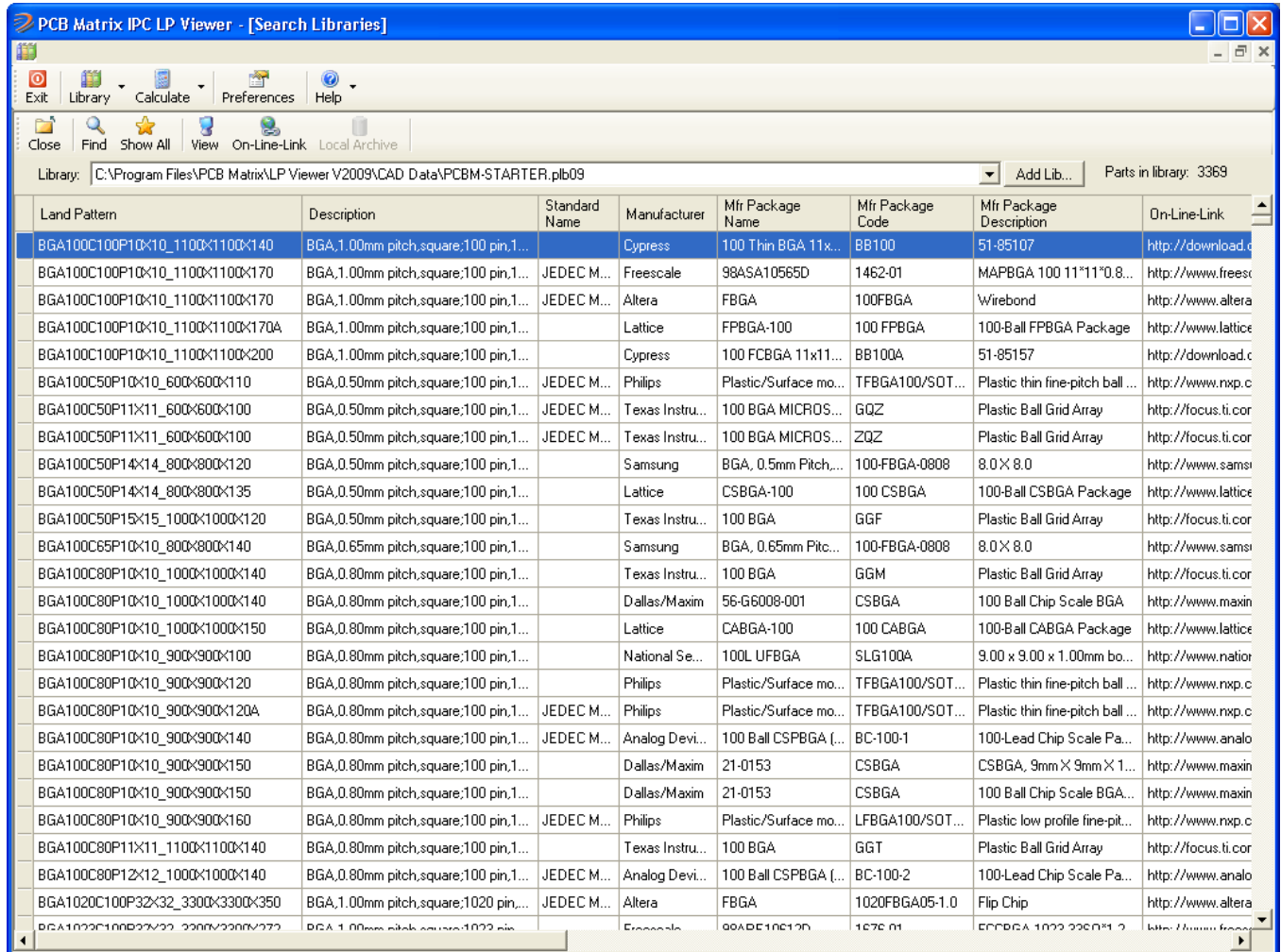


10. Use the "Calculate" drop-down to Search for land patterns in unique component families



Watch LP Viewer training videos here – <http://www.pcbmatrix.com/Products/LPSoftware/LPWizard/Training.asp>

11. Use the "Library Search" drop-down to Search for land patterns in unique PLB files



Land Pattern	Description	Standard Name	Manufacturer	Mfr Package Name	Mfr Package Code	Mfr Package Description	On-Line-Link
BGA100C100P10X10_1100X1100X140	BGA,1.00mm pitch,square;100 pin,1...		Cypress	100 Thin BGA 11x...	BB100	51-85107	http://download.c
BGA100C100P10X10_1100X1100X170	BGA,1.00mm pitch,square;100 pin,1...	JEDEC M...	Freescale	98ASA10565D	1462-01	MAPBGA 100 11*11*0.8...	http://www.frees
BGA100C100P10X10_1100X1100X170	BGA,1.00mm pitch,square;100 pin,1...	JEDEC M...	Altera	FBGA	100FBGA	Wirebond	http://www.altera
BGA100C100P10X10_1100X1100X170A	BGA,1.00mm pitch,square;100 pin,1...		Lattice	FPBGA-100	100 FPBGA	100-Ball FPBGA Package	http://www.lattice
BGA100C100P10X10_1100X1100X200	BGA,1.00mm pitch,square;100 pin,1...		Cypress	100 FCBGA 11x11...	BB100A	51-85157	http://download.c
BGA100C50P10X10_600X600X110	BGA,0.50mm pitch,square;100 pin,1...	JEDEC M...	Philips	Plastic/Surface mo...	TFBGA100/SOT...	Plastic thin fine-pitch ball ...	http://www.nxp.c
BGA100C50P11X11_600X600X100	BGA,0.50mm pitch,square;100 pin,1...	JEDEC M...	Texas Instru...	100 BGA MICROS...	GQZ	Plastic Ball Grid Array	http://focus.ti.cor
BGA100C50P11X11_600X600X100	BGA,0.50mm pitch,square;100 pin,1...	JEDEC M...	Texas Instru...	100 BGA MICROS...	ZQZ	Plastic Ball Grid Array	http://focus.ti.cor
BGA100C50P14X14_800X800X120	BGA,0.50mm pitch,square;100 pin,1...		Samsung	BGA, 0.5mm Pitch...	100-FBGA-0808	8.0 X 8.0	http://www.sams
BGA100C50P14X14_800X800X135	BGA,0.50mm pitch,square;100 pin,1...		Lattice	CSBGA-100	100 CSBGA	100-Ball CSBGA Package	http://www.lattice
BGA100C50P15X15_1000X1000X120	BGA,0.50mm pitch,square;100 pin,1...		Texas Instru...	100 BGA	GGF	Plastic Ball Grid Array	http://focus.ti.cor
BGA100C65P10X10_800X800X140	BGA,0.65mm pitch,square;100 pin,1...		Samsung	BGA, 0.65mm Pite...	100-FBGA-0808	8.0 X 8.0	http://www.sams
BGA100C80P10X10_1000X1000X140	BGA,0.80mm pitch,square;100 pin,1...		Texas Instru...	100 BGA	GGM	Plastic Ball Grid Array	http://focus.ti.cor
BGA100C80P10X10_1000X1000X140	BGA,0.80mm pitch,square;100 pin,1...		Dallas/Maxim	56-G6008-001	CSBGA	100 Ball Chip Scale BGA	http://www.maxin
BGA100C80P10X10_1000X1000X150	BGA,0.80mm pitch,square;100 pin,1...		Lattice	CABGA-100	100 CABGA	100-Ball CABGA Package	http://www.lattice
BGA100C80P10X10_900X900X100	BGA,0.80mm pitch,square;100 pin,1...		National Se...	100L UFBGA	SLG100A	9.00 x 9.00 x 1.00mm bo...	http://www.natio
BGA100C80P10X10_900X900X120	BGA,0.80mm pitch,square;100 pin,1...		Philips	Plastic/Surface mo...	TFBGA100/SOT...	Plastic thin fine-pitch ball ...	http://www.nxp.c
BGA100C80P10X10_900X900X120A	BGA,0.80mm pitch,square;100 pin,1...	JEDEC M...	Philips	Plastic/Surface mo...	TFBGA100/SOT...	Plastic thin fine-pitch ball ...	http://www.nxp.c
BGA100C80P10X10_900X900X140	BGA,0.80mm pitch,square;100 pin,1...	JEDEC M...	Analog Devi...	100 Ball CSPBGA (...	BC-100-1	100-Lead Chip Scale Pa...	http://www.analo
BGA100C80P10X10_900X900X150	BGA,0.80mm pitch,square;100 pin,1...		Dallas/Maxim	21-0153	CSBGA	CSBGA, 9mm X 9mm X 1...	http://www.maxin
BGA100C80P10X10_900X900X150	BGA,0.80mm pitch,square;100 pin,1...		Dallas/Maxim	21-0153	CSBGA	100 Ball Chip Scale BGA...	http://www.maxin
BGA100C80P10X10_900X900X160	BGA,0.80mm pitch,square;100 pin,1...	JEDEC M...	Philips	Plastic/Surface mo...	LFBGA100/SOT...	Plastic low profile fine-pit...	http://www.nxp.c
BGA100C80P11X11_1100X1100X140	BGA,0.80mm pitch,square;100 pin,1...		Texas Instru...	100 BGA	GGT	Plastic Ball Grid Array	http://focus.ti.cor
BGA100C80P12X12_1000X1000X140	BGA,0.80mm pitch,square;100 pin,1...	JEDEC M...	Analog Devi...	100 Ball CSPBGA (...	BC-100-2	100-Lead Chip Scale Pa...	http://www.analo
BGA1020C100P32X32_3300X3300X350	BGA,1.00mm pitch,square;1020 pin,...	JEDEC M...	Altera	FBGA	1020FBGA05-1.0	Flip Chip	http://www.altera
BGA1020C100P32X32_3300X3300X375	BGA,1.00mm pitch,square;1020 pin,...		Freescale	98APE10612D	1676-01	FPBGA 1020 3300X375	http://www.frees

12. Use the "Find" Button to search for manufacture's part information –

